



Primary 6 Integrated Science

Term 3

Theme: Human Health

Topic 4/4 – The Reproductive System

Learning Outcomes: The learner;

- develops further knowledge about his/her reproductive system.
- acquires scientific knowledge and life skills for improving and maintaining the efficiency of his/her reproductive system.

Growth and Development in Human Beings

Growth

Growth means the **increase in size and weight** of the body.

Example: a child grows taller, heavier, and stronger.

It can be measured (height, weight, body size).

Development

Development means the **changes in ability and behavior** as a person matures.

Example: learning to talk, walk, read, write, and think better.

It cannot be measured in numbers but seen in skills and maturity.

Key Points

- (i) Growth is **physical increase**.
- (ii) Development is **improvement in skills and abilities**.
- (iii) Both happen together as a child becomes an adult.

Exercise 1

Distinguish between growth and development

Puberty and Adolescence

Puberty

- Puberty is the stage when a child's body **changes into an adult body**.
- Boys and girls develop new features:
 - Boys grow beards, deeper voice, and broader chest.
 - Girls grow breasts, wider hips, and begin menstruation.
- It usually happens between **10–15 years**.

Adolescence

- Adolescence is the **period between childhood and adulthood**.
- It includes both **growth of the body** and **development of the mind**.
- Adolescents become more independent, start thinking like adults, and prepare for future responsibilities.

☞ In short:

- **Puberty** is the physical body changes.
- **Adolescence** is the wider stage of growing up, including both body changes and mental maturity.

Exercise 2

Distinguish between puberty and adolescence

Primary and Secondary Sex Characteristics:

Primary Sex Characteristics

These are the **body parts we are born with** that are directly involved in reproduction.

Examples:

- Boys: testes and penis.
- Girls: ovaries, uterus, and vagina.

Secondary Sex Characteristics

These are the **changes that appear during puberty** but are not directly used for reproduction.

Examples:

- Boys: deeper voice, beard, broad chest.
- Girls: breasts, wider hips, soft voice.
- Both: growth of hair under armpits and private parts.

In short:

- **Primary sex characteristics** are the reproductive organs present at birth.
- **Secondary sex characteristics** are the physical changes that appear during puberty.

Exercise 3

- (a) List any **two** primary sexual characteristics in female
- (b) State any **two** secondary sexual characteristics in male

Social and Emotional Changes at puberty/adolescence

Social Changes

- (i) Adolescents begin to **make more friends** and enjoy group activities.
- (ii) They want more **independence** from parents.
- (iii) Peer pressure can influence their behavior.

- (iv) They start to **choose role models** and copy their behavior.
- (v) They may become more **responsible** at home and school.

Emotional Changes

- (i) Adolescents may feel **shy or embarrassed** about body changes.
- (ii) Desire love and belonging
- (iii) They experience **strong feelings** like happiness, sadness, or anger more often.
- (iv) They may develop **curiosity about the opposite sex**.
- (v) They sometimes feel **confused or worried** about growing up.

☞ In short:

- **Social changes** are about how young people relate to others.
- **Emotional changes** are about how they feel inside as they grow.

How to manage social and emotional changes

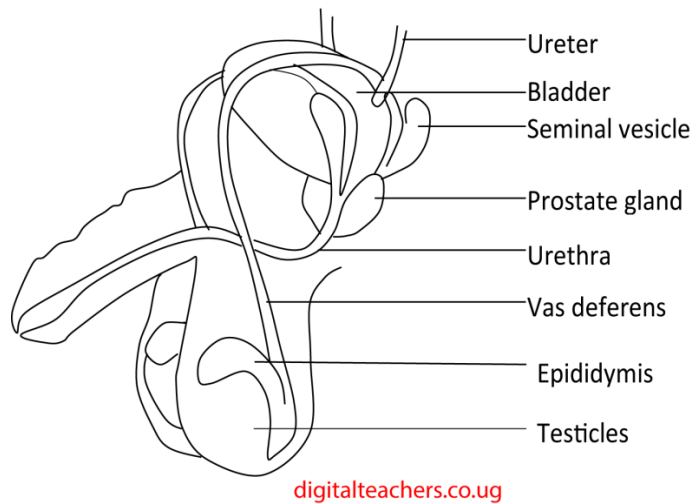
- (i) **Seek guidance** – talk to parents, teachers, or trusted adults.
- (ii) **Stay focused on education** – avoid distractions that can affect studies.
- (iii) **Choose good friends** – avoid peer groups that encourage bad habits.
- (iv) **Practice self-control** – learn to manage emotions calmly.
- (v) **Keep busy with positive activities** – sports, reading, helping at home.
- (vi) **Respect yourself and others** – value your body and feelings.

Exercise 4

List two social and two emotional changes in adolescents

Reproductive Organs and Cells in Human Male and Female:

Male Reproductive Organs

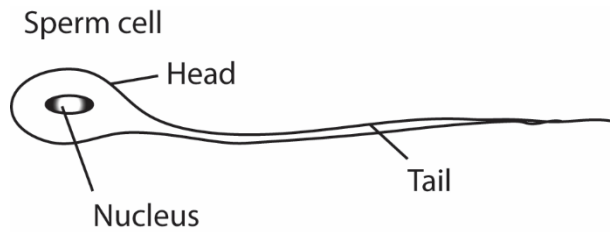


Parts of the male reproductive system

Parts	Functions
Testis	Produce sperms, the male gametes and male hormones
Scrotum	Bag that hold and protect the testis
Sperm duct/ Vas deferens	Carries sperms from the testis to urethra
Urethra	Passage for both semen and urine
Penis	Deposits sperms into the vagina, passes urine
Epididymis	Stores sperms

Male Reproductive Cells

- **Sperms** – tiny cells produced in the testes.



- They join with the female egg to form an embryo/ baby.

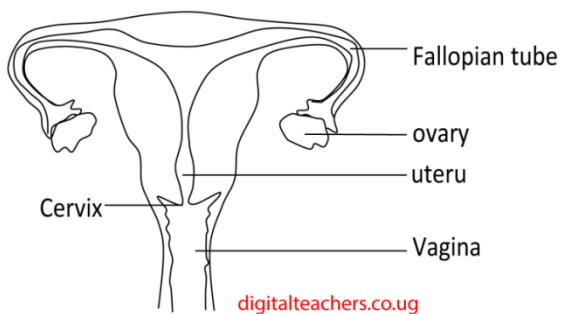
Exercise 4

(a) State one function of each of the following parts of a male reproductive system

- Testis
- Urethra
- epididymis

(b) Name the male reproductive cell.

Female reproductive system



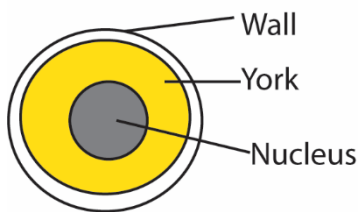
Parts of the male reproductive system

Parts	Functions
Ovaries	Produce eggs and female hormones.
Oviduct/Fallopian tube	This is where fertilization takes place Fertilization is the union of male and female gametes
Uterus/womb	This is where the fetus develops
Cervix	This is the lower part of uterus. It allows sperms into the uterus Retains the fetus in the uterus before birth
Vagina/birth canal	It is where sperms are deposited It is a tube through which the baby passes during parturition /giving birth

Female Reproductive Cells

- **Eggs (ova)** – tiny cells produced in the ovaries.

The Ovum



- They join with sperms to start the growth of a baby.

The process of releasing an egg from the ovary into a fallopian tube is called ovulation. It occurs every 28 days.

Egg remain alive for 2 days. If not fertilized, the egg and the thickened walls of the uterus come out of the body in form of blood by the process of **menstruation**.

☞ In short:

- **Males** have organs that produce **sperms**.
- **Females** have organs that produce **eggs**.
- When a sperm and an egg join, a new life begins.

Exercise 5

- (a) State one function of each of the following parts of a female reproductive system
- Ovary
 - Uterus
 - Cervix
- (b) Name the female reproductive cell.

Fertilizations, Conception, and Pregnancy in Humans

Fertilizations

Fertilizations happens when a **male sperm cell** joins with a **female egg cell**.

This usually takes place in the **female's fallopian tube**.

The joining forms a single new cell called a **zygote**.

Conception

Conception is the **beginning of a baby's life**.

It starts immediately after fertilization when the zygote begins to grow.

The zygote moves to the **uterus (womb)** and attaches itself to the wall.

Pregnancy

Pregnancy is the **period when a baby grows inside the mother's womb.**

It lasts about **nine months.**

During this time, the baby develops organs, body parts, and grows until birth.

☞ In short:

- **Fertilizations** – sperm joins egg.
- **Conception** – start of baby's life.
- **Pregnancy** – baby grows in the womb until birth.

Exercise 6

(a) Give the meaning of the following terms

- (i) **Fertilizations**
- (ii) **Conception**
- (iii) **Pregnancy**

(b) How long is the human gestation period

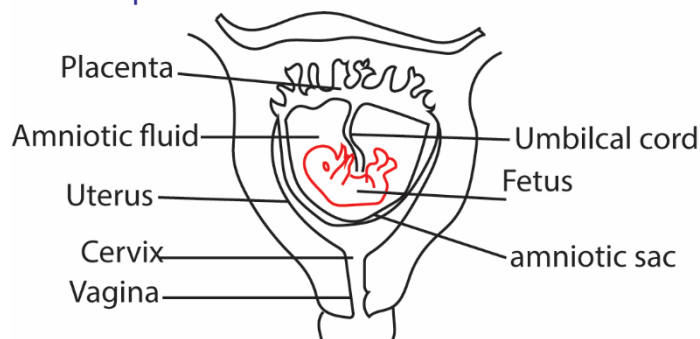
Implantation

This is the attachment of the zygote to the walls of the uterus. Immediately after implantation, the zygote becomes an **embryo.**

An embryo develops into a fetus after 6 to 8 weeks

The fetus develops and at birth is called a newborn baby.

Development of fetus in the womb



Placenta

This is an organ of attachment between the mother and the fetus

Functions of the placenta

- (i) **Provides food** – passes nutrients from the mother to the baby.
- (ii) **Provides oxygen** – helps the baby breathe inside the womb.
- (iii) **Removes waste** – takes away waste products from the baby's blood.
- (iv) **Protects the baby** – acts as a barrier against some harmful germs.

Exercise 7

- (a) What is implantation?
- (b) What is a placenta?
- (c) State any **two** functions of a placenta.

Why should mothers and fetal blood not mix?

The **mother's blood** and the **baby's blood** are kept separate by the **placenta**.

If they mix, problems can happen because:

- (i) **Different blood groups** – the mother and baby may have different blood types, which can cause the mother's body to fight the baby's blood.
- (ii) **Diseases** – harmful germs or substances in the mother's blood could pass directly to the baby.

- (iii) **Protection** – keeping the blood separate helps the placenta control what passes (only food, oxygen, and safe substances).

Umbilical cord

This is a flexible tube that connects the fetus at the abdomen to the placenta

Functions of the umbilical cord

- (i) Transports food nutrients and oxygen from the mother to fetus
- (ii) Transports waste products from the fetus to the mother

The amniotic fluid

This is a clear jelly-like liquid that surrounds the fetus.

- (i) **Protects the baby** – acts like a cushion to prevent injury.
- (ii) **Helps movement** – allows the baby to move and grow freely.
- (iii) **Keeps temperature** – maintains warmth around the baby.
- (iv) **Supports growth** – helps the baby's lungs and digestive system develop.
- (v) **Prevents infection** – provides a safe environment for the baby.

Breastfeeding

Breastfeeding is when a **mother feeds her baby with milk from her breast.**

It is the **natural and best food** for a newborn baby.

Importance of Breastfeeding

- (i) **Provides complete food** – breast milk has all nutrients the baby needs.
- (ii) **Protects against diseases** – it contains antibodies that keep the baby healthy.
- (iii) **Helps bonding** – strengthens love between mother and child.
- (iv) **Saves money** – no need to buy expensive milk.

- (v) **Helps mother's health** – reduces risk of some diseases and helps the womb return to normal size.

Good Practices in Breastfeeding

- (i) Start breastfeeding **immediately after birth**.
- (ii) Give the baby **only breast milk for the first 6 months** (no water or other foods).
- (iii) Continue breastfeeding while introducing other foods after 6 months.
- (iv) Keep the mother **healthy by eating balanced meals and resting well**.

Exercise 8

- (i) What is breastfeeding?
- (ii) State any two importance of breast feeding
- (iii) Give any one good practice during breastfeeding

Antenatal Care

Antenatal care is the **care given to a pregnant mother before the baby is born**.

It helps to keep both the **mother and baby healthy** during pregnancy.

Services Provided in Antenatal Care

- (i) **Regular check-ups** – health workers examine the mother and baby's health.
- (ii) **Blood and urine tests** – to detect diseases like anemia or infections.
- (iii) **Medicines and supplements** – such as iron and folic acid tablets to keep the mother strong.
- (iv) **Immunization** – injections to protect the mother and baby from diseases.
- (v) **Health education** – advice on feeding, rest, hygiene, and safe delivery.
- (vi) **Monitoring baby's growth** – checking the baby's heartbeat and position.
- (vii) **Counseling** – preparing the mother emotionally for childbirth and breastfeeding.

Family care to pregnant women.

- (i) Provide a balance diet
- (ii) Show them love
- (iii) Give them enough rest
- (iv) Give appropriate dressing

Exercise 9

- (a) What is antenatal care
- (b) Give any two services provided by antenatal care.
- (c) State any one family provided to a pregnant mother.

Problems in Pregnancy

- (i) **Poor feeding** – if the mother does not eat well, the baby may not grow properly.
- (ii) **Diseases** – illnesses like malaria can harm both mother and baby.
- (iii) **Heavy work** – carrying heavy loads or doing hard work can cause miscarriage.
- (iv) **Alcohol and smoking** – these can damage the baby's health.
- (v) **Lack of medical care** – not visiting health workers may lead to untreated problems.
- (vi) **Stress and worry** – can affect the mother's health and the baby's growth.

Teenage Pregnancy

Teenage pregnancy happens when a **girl below 20 years** becomes pregnant.

It usually occurs before she is fully grown and ready to take care of a baby.

Consequences of Teenage Pregnancy

- (i) **Health problems** – the girl's body may not be ready, leading to complications.
- (ii) **School dropout** – many teenage mothers stop studying.
- (iii) **Poverty** – without education, it is harder to get good jobs.
- (iv) **Social problems** – teenage mothers may face shame, rejection, or stress.
- (v) **Poor care for the baby** – young mothers may lack knowledge and support.

Exercise 10

- (a) What is teenage pregnancy?
- (b) Give any two consequences of teenage pregnancy

Care for Reproductive Organs

Care for Male Reproductive Organs

- (i) **Wash daily** with clean water and soap.
- (ii) **Wear clean underwear** and change it often.
- (iii) **Avoid tight clothes** that cause sweating.
- (iv) **Do not share underwear or towels** to prevent infections.

Care for Female Reproductive Organs

- (i) **Wash daily** with clean water and soap.
- (ii) **Change sanitary pads regularly** during menstruation.
- (iii) **Do not wash inside the vagina with soap because removing mucus promotes urinary tract infection (UTI) such as candida**
- (iv) **Wear clean cotton underwear** and change it often.
- (v) **Avoid inserting objects or using dirty materials** to prevent infections.

General Care for Both

- (i) **Keep the body clean** through bathing.
- (ii) **Eat healthy foods** to support growth.
- (iii) **Seek medical help** if there is pain, swelling, or unusual discharge.

☞ In short: **Reproductive organs must be kept clean, protected, and checked by health workers when problems arise.**

Diseases and Disorders of the Reproductive System (STIs)

Common Diseases of the Reproductive System

- (i) **Urinary tract infections (UTIs)** – cause pain when passing urine.
- (ii) **Candidiasis (yeast infection)** – causes itching and discharge in females.

(iii) **Prostate problems** – affect men’s reproductive health.

Sexually Transmitted Infections (STIs)

STIs are diseases passed from one person to another through sexual contact.

Examples include:

- **HIV/AIDS** – weakens the body’s defense system.
- **Syphilis** – causes sores and rashes.
- **Gonorrhea** – causes pain and discharge.

Effects of STIs

- (i) Can cause **serious illness** if untreated.
- (ii) May lead to **infertility** (failure to have children).
- (iii) Can cause **death** in severe cases (like untreated HIV/AIDS).

Exercise 11

- (a) State any one care the reproductive system
- (b) Write the following in full

- (i) UTI
- (ii) STI

- (c) Give any one example each of UTI and STI.

Disadvantages of big families

- (i) **Large family** size leads to scarcity of basic services like food, health, clothing and shelter.
- (ii) Lack of basic amenity like food leads to malnutrition which affects the health of children.

Family planning

Family planning means **parents deciding when to have children and how many to have.**

Importance of Family Planning

- (i) Helps parents **plan the number of children** they can care for.
- (ii) Ensures **better health** for the mother and children.
- (iii) Allows parents to **provide education, food, and shelter** more easily.
- (iv) Reduces **poverty and stress** in families.

Uses of Family Planning

- (i) To **avoid unwanted pregnancies**.
- (ii) To **space children** so they are born at healthy intervals.
- (iii) To give parents time to **rest and work** before another child.

Methods of Family Planning

- (i) **Natural methods** – like breastfeeding and counting safe days.
- (ii) **Artificial methods** – like using condoms, pills, or injections (explained simply as medicines or tools to prevent pregnancy).
- (iii) **Permanent methods** – operations done when parents decide not to have more children.

Child Spacing

- (i) Child spacing means **leaving enough time between births** (usually 2–3 years).
- (ii) It helps the mother **recover her health**.
- (iii) It gives the child **better care and attention** before another baby comes.

Myths and Misconceptions about Family Planning:

Myths and Misconceptions

- (i) **“Family planning makes women barren.”** – False. Family planning does not stop women from having children later.
- (ii) **“Only women should use family planning.”** – False. Men can also use methods like condoms.
- (iii) **“Family planning is against culture or religion.”** – False. It is about keeping families healthy and well cared for.
- (iv) **“Family planning is only for old people.”** – False. Even young married couples can use it to plan their families.

- (v) **“Family planning causes diseases.”** – False. When used correctly, family planning methods are safe.

Exercise 12

- (a) State any one disadvantage of a big family
- (b) List any three contraceptive measures

Infertility

Infertility is when a **man and woman fail to have a baby** after living together for a long time.

It means the reproductive system is not working properly.

Causes of Infertility

- (i) **Diseases** like untreated STIs (e.g., syphilis, gonorrhoea, HIV/AIDS).
- (ii) **Poor feeding** – lack of good nutrition affects body health.
- (iii) **Alcohol and smoking** – damage reproductive organs.
- (iv) **Stress and worry** – can affect body functions.
- (v) **Old age** – fertility reduces as people grow older.

Prevention of Infertility

- (i) **Keep reproductive organs clean.**
- (ii) **Avoid risky behaviors** like early sex, drugs, and alcohol.
- (iii) **Seek medical care** when sick.
- (iv) **Eat healthy foods** to keep the body strong.

PIASCY Messages (PIASCY = Presidential Initiative on AIDS Strategy for Communication to the Youth)

- (i) **Abstain from sex** until you are mature and ready.
- (ii) **Avoid bad peer groups** that may lead you into risky behavior.
- (iii) **Say no to drugs and alcohol** because they can lead to poor decisions.
- (iv) **Respect your body** and keep it clean.
- (v) **Seek guidance** from parents, teachers, and health workers.
- (vi) **Focus on education and future goals** instead of early relationships.

(vii) **Protect yourself from HIV/AIDS and STIs** by avoiding unsafe practices.

Exercise 13

State any **two** PIASCY messages.

Revision Questions

1. State any one way through which breast feeding prevents diseases in babies.
It contains antibodies that fight disease causing agents
Balanced diet promotes immunity in babies
2. Name the male reproductive system that stores sperms.
Epididymis
3. (a) Give any two social changes that take place at puberty
 - (i) Make many friends
 - (ii) Peer pressure
 - (iii) Need independence

(b) Mention any **two** ways through which an adolescent can manage the social changes

 - (i) **Seek guidance** – talk to parents, teachers, or trusted adults.
 - (ii) **Stay focused on education** – avoid distractions that can affect studies.
 - (iii) **Choose good friends** – avoid peer groups that encourage bad habits.
 - (iv) **Practice self-control** – learn to manage emotions calmly.
 - (v) **Keep busy with positive activities** – sports, reading, helping at home.
 - (vi) **Respect yourself and others** – value your body and feelings.
4. Give any example of emotional change in adolescents.
 - a. Mood swings – sometimes happy, sometimes sad.
 - b. Strong feelings of **self-awareness** (worrying about looks or acceptance).
 - c. Desire for **love and belonging**.
 - d. Curiosity about relationships.
5. State one way in which the child Health Card is important to a parent.
 - (i) **Records immunization** – shows which vaccines the child has received.
 - (ii) **Tracks growth** – records the child’s weight and height to check healthy development.
 - (iii) **Guides parents** – reminds them of the next clinic visit or immunization date.
 - (iv) **Helps health workers** – gives doctors and nurses information about the child’s health history.

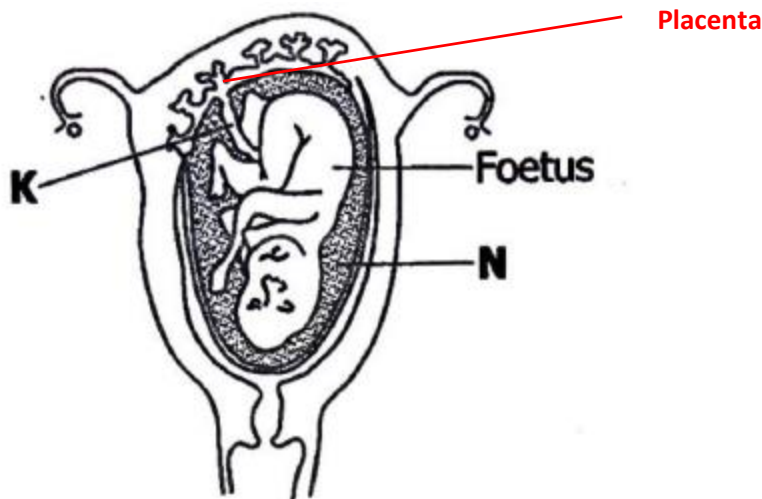
- (v) **Protects the child's future health** – ensures the child gets all necessary care on time.
6. (a) Identify any one body change in girls during adolescence
- (i) Bulging of breasts
 - (ii) Softening of skin
 - (iii) Enlargement of hips
- (b) State any two ways in which school boys can help to prevent teenage pregnancy.
- (i) Abstaining from sex
 - (ii) Joining good company
 - (iii) Not using drugs
- (c) State any one way of caring for the reproductive system in human
- (i) Keeping it clean and dry
 - (ii) Not engaging unsafe sex
 - (iii) Early treatment of UTI and STI
 - (iv) Eating balanced diet
7. State any one way in which an adolescent can control bad odor that result from body changes.
- (i) **Bathe regularly** – wash the body at least twice a day with soap and water.
 - (ii) **Wear clean clothes** – change clothes often, especially underwear.
 - (iii) **Use deodorant or powder** – helps reduce sweating and odor.
 - (iv) **Eat healthy foods** – avoid too much junk food that can cause strong body smell.
 - (v) **Stay active and clean** – after sports or heavy work, bathe and change clothes.
 - (vi) **Maintain oral hygiene** – brush teeth at least twice a day to prevent mouth odor.
8. State **one** danger of teenage pregnancy
- (i) **Poor health for the mother** – teenage girls' bodies are not fully developed, so pregnancy can cause complications.
 - (ii) **Risk to the baby** – babies may be born too early or underweight.
 - (iii) **School dropout** – teenage mothers often leave school and lose education opportunities.
 - (iv) **Poverty** – without education and support, teenage mothers may struggle financially.

- (v) **Emotional stress** – young mothers may feel worried, ashamed, or overwhelmed.
- (vi) **Family problems** – teenage pregnancy can cause conflict between the girl and her parents.

9. How the PIASCY program help school children to avoid does infected with HIV/AIDS.

- (i) **Teaches abstinence** – encourages pupils to wait until they are mature before engaging in sex.
- (ii) **Gives correct information** – explains what HIV/AIDS is and how it spreads.
- (iii) **Warns against risky behavior** – discourages drug use, alcohol, and bad peer groups.
- (iv) **Promotes good values** – teaches respect, self-control, and discipline.
- (v) **Encourages openness** – pupils are guided to ask questions and seek advice from teachers and parents.
- (vi) **Supports healthy living** – emphasizes cleanliness, good feeding, and focusing on education.

10. The diagram below is of a developing foetus in a mother's womb. Study and answer the questions that follow



- (a) Name the substance marked N
Amniotic fluid
- (b) Give two uses of the part marked K to the foetus.
 - (i) Supplies it food

(ii) Removes waste products

(c) On the diagram above, label the placenta.

11. How does prolonged breastfeed help in child spacing?

It delays ovulation

12. Match items in columns A and B

A: Processes	B: Meaning
a. Ovulation	union of a sperm and an ovum.
b. Implantation	release of ovum from ovary.
c. Pregnancy	attachment of the embryo on the uterus wall.
d. Fertilization	a period from fertilization to birth.

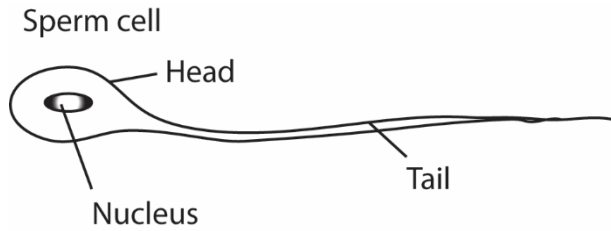
13. State one effect of gonorrhoea on the female reproductive system.

- (i) **Pelvic Inflammatory Disease (PID)** – infection spreads to the uterus, fallopian tubes, and ovaries causing pain and damage.
- (ii) **Blocked fallopian tubes** – scarring can block the tubes, leading to infertility.
- (iii) **Ectopic pregnancy** – damaged tubes may cause pregnancy outside the womb, which is dangerous.
- (iv) **Infertility** – untreated gonorrhoea can make it difficult or impossible for a woman to have children.
- (v) **Pregnancy complications** – infection can cause miscarriage, premature birth, or infect the baby.

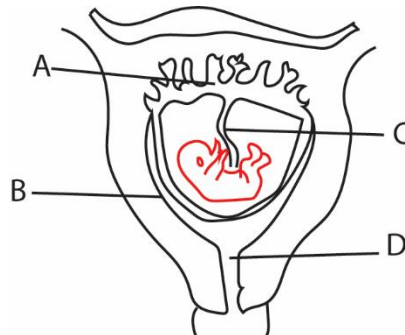
14. One secondary sexual characteristics common to both boys and girls

Pubic hair, armpit hair

15. Draw a sperm cell in the space below:

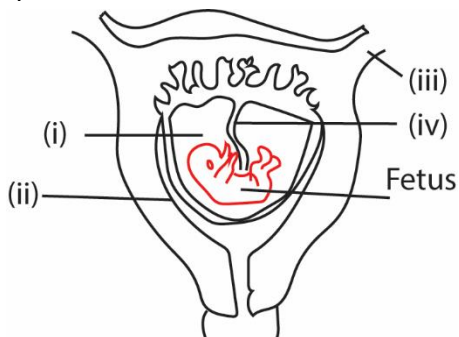


16. The following diagram shows reproduction in human beings. Use it to answer the questions that follow



- (a) Name the parts A and B
A. Placenta
B. Uterus
- (b) Give one function of C and one function of D
C. Transports nutrients form
D. Cervix protects entrance of the uterus

17. The following diagram shows reproduction in human beings. Use it to answer the questions that follow.

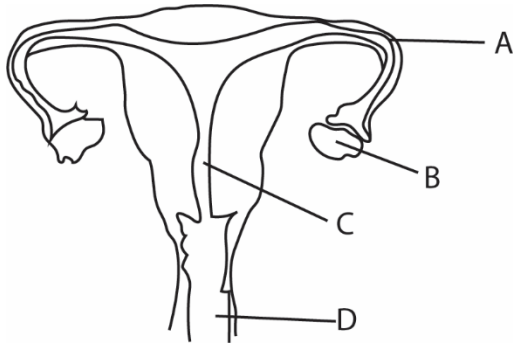


State functions of parts (i), (ii), (iii) and (iv).

- (i) Amniotic fluid protect the fetus from shock**

- (ii) Uterus is where the fetus grows
- (iii) Oviduct is where fertilization takes place
- (iv) Umbilical cord transports nutrients from the mother to fetus

18. Name the parts of the reproductive system below



- A. Oviduct/fallopian tube
- B. ovary
- C. uterus
- D. vagina

19. The table below shows the parts of female reproductive system and their functions.

Complete the table correctly.

Parts pf female reproductive system	Functions of parts
Oviduct	Where fertilization takes place
Ovary	Produce ova Produces progesterone and estrogen
Vagina	The passage way of the baby
Uterus	It is where the fetus develops

20. (a) What do you understand by family planning?

The method whereby a couple chooses when to have children according to their income.

(b) Give two disadvantages of becoming a parent at an early age.

Drop out of school

Failure to look after one's children.

The child may not be ready for marriage

21. What is the advantage of family planning to a mother?

Prevents unwanted pregnancy

Leads to child spacing.

Allows the uterus to repair before the next pregnancy

22. What is the purpose of marriage?

Produce children

Provide protection and company

23. (a) What do you understand by adolescence?

Is a period between childhood and adulthood

(b) Name two secondary sex characteristic of adolescence.

Growth of pubic hair

Development of breasts in girls

Development of broad chest in boys

(c) Give one disadvantage of pregnancy in adolescence

- **Lead to school drop out**
- **Giving birth may be a problem leading to death of mother and a child**
- **Attempted abortion may lead to death**
- **Failure to support he baby**

24. A married couple has 10 children. The oldest is 15 years while the youngest is 3months old.

(a) State two problems this family is likely to face.

Lack of enough food

Lack of proper medication

Congestion in a house

(b) Mention one health problem the mother may face

Mother's uterus may be destroyed

Premature birth

Mother's death
Maternal anemia

(c) State one suitable advice you would give to this family.

Should join family planning

25. State some one major reason why breast milk is considered the best food for a bay?

Contains all food nutrients needed by the child

26. What is weaning a child?

Is a process of making a baby get used to other foods while breast feeding.

State one reason one reason why it is not advisable to have many children.

It may be difficult to care for them

27. (a) Name one change that occur during adolescence in

(i) Male: - **pubic hairs**
- **Deep voice**

(ii) Female- **pubic hairs**
- **smooth voice**
- **growth of breasts**

(b)State two factors you consider when choosing a partner for marriage.

Attractiveness

Behavior

Education

Religion

culture

28. (a) What is STDS?

Sexually transmitted diseases

(b) Give two examples of STDS.

Gonorrhoea

Syphilis

Candidiasis

(C) State one way in which STDs can be controlled.

Abstinence

Being faithful to some one's partner

Use of a condom

29. Why should a girl avoid teenage pregnancy?

Teenage pregnancy lead to drop out of school

Teenage pregnancy may lead to fistula

May lead to obstructed delivery.

May lead to failure to look after the baby properly

30. Give one of the secondary sex characteristics that is common in both adolescent boys and girls.

Growth of pubic hair

Sweat gland become more active

Growth of hair in the armpit



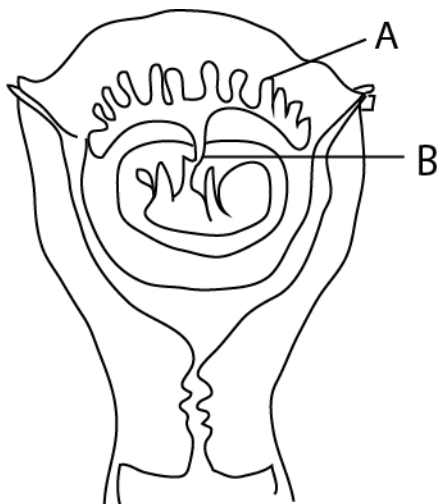
31. Suggest any one problem of early pregnancy to a school girl below 18 years.

- lead to drop out of school

- girls may die while giving birth

- girl are likely to abort because they are not prepared for pregnancy

The diagram below a fetus in the womb. Use it to answer questions 16 and 17



32. Name the part marked with letter A

Placenta

33. State any one way in which the part marked with letter B is useful to the fetus.

B the umbilical cord:

- **Conduct nutrients and oxygen to the fetus**
- **takes away carbon dioxide and waste products from the fetus**

34. (a) Name the germ that causes HIV/AIDS.

Virus, HIV

(b) Apart from having sex with an infected person, write down two other ways in which one can get the germ that causes HIV/AIDS

(i) From mother to child at birth

(ii) Sharing sharp objects

(iii) Circumcision

(c) ABC is a way of controlling the spread of the germ that causes **HIV/AIDS**. What does **A** stand for?

Abstinence from sex.

35. Give one way in which the umbilical cord is important to the developing fetus in the uterus.

Transports food nutrients from mother to fetus

Removes waste products from the fetus to the mother

Transports oxygen from the mother to the fetus

36. (a) Mention two primary sex changes that happen in boys

(i) **Voice deepens**

(ii) Start to produce sperms

(b) Give two secondary sex changes which happen in both boys and girls

(i) Growth of pubic hair

(ii) Growth of hair in armpit

37. (a) Give any two reasons why it is important to wash hands before eating food.

(i) To remove dirt

(ii) To remove germs

(b) Apart from washing, mention any two other activities one can do to maintain personal hygiene.

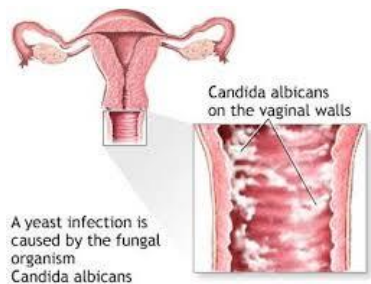
(i) mopping a house

(ii) brushing teeth

(iii) Washing the body

38. Name one other disease caused by fungi in human s apart from ring worm.

Candida



oral thrush



Dhobis itch



39. (a) Apart from ante –natal care, give two other ways of caring for pregnant women.

(i) **Provide a balance diet**

(ii) **Show them love**

(iii) **Give them enough rest**

(iv) Give appropriate dressing

(b) In which one ways should pregnant women protect their unborn babies from malaria?

(i) Take antimalarial like Fansidar

(ii) Sleep in mosquito treated nets

(iii) Use mosquito repellent

(c) Why are pregnant women advised not to smoke?

(i) To avoid premature death

(ii) Avoid lung cancer

(iii) Avoid still birth

40. Which sexually transmitted disease can cause blindness in babies?

Gonorrhea

41. Apart from production of eggs (ova), mention one other use of the ovaries in the human body.

Ovary produce hormones such as estrogen and progesterone

42. (a) In the human reproductive system, state where each of the following processes take place:

(i) Implantation: : **uterus**

(ii) Production of sperms: **testis**

(iii) Production of female hormones: **ovaries**

(b) Give any one use of the placenta to the fetus during pregnancy

- **Supplies food, oxygen, hormones**

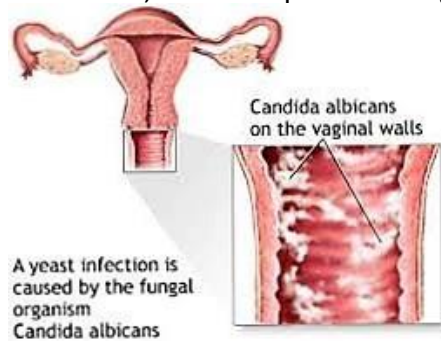
- **prevent disease germs from reaching the fetus**

- **Attachment of the fetus to the mother**

- **To deliver carbon dioxide and wastes from the fetus**

43. Name the fungal-caused sexually transmitted disease, which is spread through poor hygiene.

Candidiasis/ thrust



44. State one effect of gonorrhoea on the female reproductive system

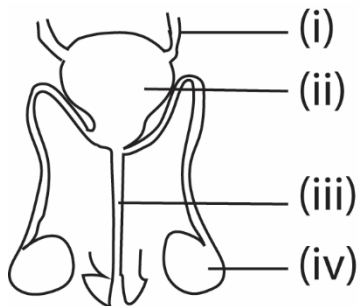
Increased **vaginal discharge**.

Painful **urination**.

Vaginal bleeding between periods, such as after vaginal intercourse.

Abdominal or pelvic **pain**.

45. Give the name and functions of the parts of the male reproductive system below



(i) Ureter transports urine from the kidney to the bladder

(ii) Urinary bladder stores urine

(iii) Urethra transport urine and sperms outside

(iv) Testis produce sperms and male hormones

Thank You

Dr. Bbosa Science